

# PUSAN COUPLING CORPORATION



Head Office: # 29, Noksansandan 362-ro, Gangseo-gu, Busan, Republic of Korea  
Tel: +82-51-973-2177 / Fax: +82-51-832-2103 / E-mail. [sales@pusancoupling.co.kr](mailto:sales@pusancoupling.co.kr)

# Global CONTENTS

PCC take a step toward global company.

01 Introduction



02 Products

03 Product Process

# CEO Greeting

PCC was established in 1975 and started out as coupling manufacturing company.

PCC grew rapidly as pipe fitting suppliers, expanding its products into carbon,

Stainless, alloy and duplex. We have supplied to customers in ship building,

Construction, refineries, and nuclear & power generation.

To promote overseas business more aggressively, we set up branches in the USA.

We try to become world leading company by investing in R&D and our employees,

believing that the quality and the excellent service are key to customer satisfaction.

We thank all our customers and promise that we will do our best to serve your needs.

C.E.O of Pusan Coupling Corporation (PCC)

**Jae-Won Roh**



STEP.1

INTRODUCTION



# Introduction



**1) Trade name : PUSAN COUPLING CORPORATION**

**2) President : JAE-WON ROH**

**3) Date of Establishment : August in 1975**

**4) Address**

**\* Head Office: # 29, Noksansandan 362-ro, Gangseo-gu, Busan,  
Republic of Korea**

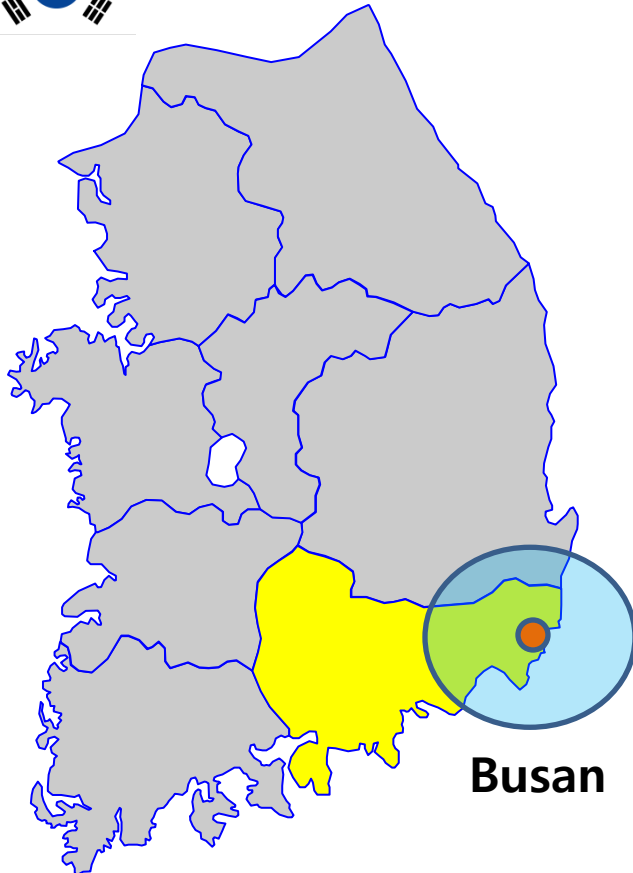
**\* Branch Office: # 639 Teaneck Road, Suite #1 Teaneck,  
New Jersey 07632**



**5) Other Information**

Size of Plant (Head Office)		Contact Information	
Building	705m <sup>2</sup>	Tel	+82-51-973-2177
		Fax	+82-51-832-2103
Site	11,000m <sup>2</sup>	E-mail	steve.roh@pusancoupling.co.kr

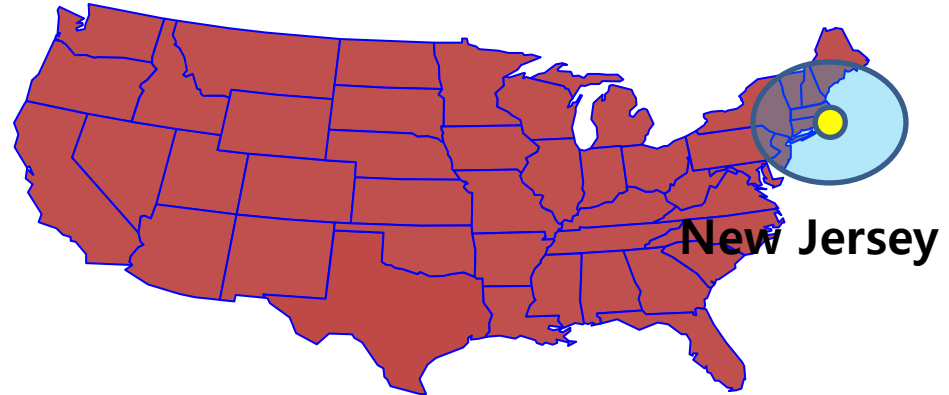
# Location



**Busan**

**HEAD OFFICE(PLANT)**

# 29, Noksansandan 362-ro, Gangseo-gu, Busan

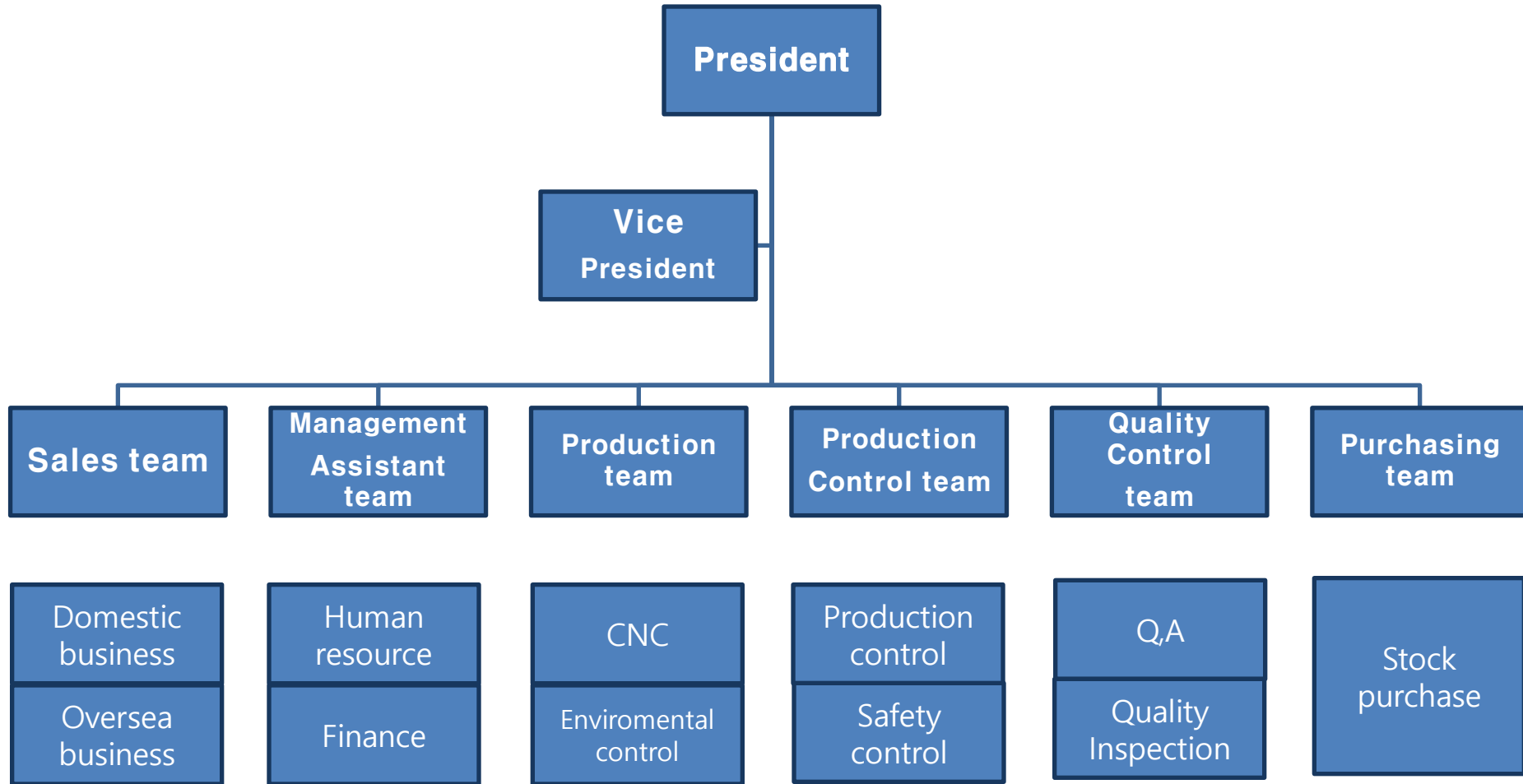


**New Jersey**

**BUSINESS OFFICE IN New Jersey**

# 639 Teaneck Road, Suite # 1 Teaneck, NJ 07632

# Organization Chart



**Number of employee.39people (office workers-12people & Factory workers-27people)**

# History

- 1975. 08** Established Pusan Socket Company
- 1983. 04** Installed automatics socket machine
- 1984** Registered with CSA
- 1992. 10** Moved to bigger facility in Kimhae City
- 1993. 02** Changed Company name to Pusan Coupling / Inauguration of CEO  
( Woo-Jun Kim )
- 1994. 04** Began production of shipbuilding related fittings
- 1995. 03** Began Weld Fitting production. Installed Hot forming Elbow Machine
- 1996. 10** Export Business permit registration
- 1999. 12** Acquired certificate of KSB 1533, KSC8460 and ISO 9001
- 2001** Installed the second Hot forming Elbow Machine
- 2002. 03** Approved as tube & fitting manufacture by API(American Petroleum  
Institute)
- 2003. 01** Moved factory to Noksan Industrial, Busan Complex
- 2005. 09** Installed the third Hot forming Elbow Machine
- 2006. 07** Installed Large-Scale Fabricator
- 2007. 09** Acquired certificated of OHSAS 18001
- 2009. 07** Established JEDO Company
- 2011. 11** Expanded factory and built dormitory
- 2012. 08** Changed Jedo company name to Jedo fitting corp.
- 2014. 01** Changed Pusan Coupling Corporation name to Pusan Fitting  
Corporation( PFC )
- 2015. 12** Established Pusan Coupling Corporation( PCC ) / Inauguration of CEO  
( Jae-Won Roh )



# Equipment list

No.	Equipment name	equipment specification	Installation of year/month	Remarks
1	E200 CNC (UNIT 3)	2-7/8"~4-1/2"	2013. 01	
2	L280 CNC (UNIT 2)	2-7/8"~7"	2013. 01	
3	L300 CNC (UNIT 2)	4"~9-5/8"	2013. 01	
4	Marking Machine (UNIT 1)	Roll Type	2007. 10.	
5	Marking Machine (UNIT 2)	Roll Type	2007. 10.	
6	Marking Machine (UNIT 3)	Roll Type	2007. 10.	
7	Marking Machine (UNIT 4)	Roll Type	2007. 10.	
8	Marking Machine (UNIT 5)	Dot Type	2008. 05.	
9	Marking Machine (UNIT 6)	Move Type	2008. 05.	
10	Marking Machine (UNIT 7)	Roll Type	2007. 10.	
11	Cutting Machine (UNIT 1)	H-560HFA	2007. 03.	
12	Cutting Machine (UNIT 2)	H-460	2001. 12.	
13	Cutting Machine (UNIT 3)	H-340HFA	2005. 04.	
14	Cutting Machine (UNIT 4)	S-460HB	2000. 06.	
15	Cutting Machine (UNIT 5)	NHC-120NA	2007. 11.	
16	Hoist (UNIT 1)	5Ton	2008. 04.	
17	Hoist (UNIT 2)	5Ton	2003. 03.	
18	Hoist (UNIT 3)	5Ton	2003. 03.	
19	Hoist (UNIT 4)	5Ton	2004. 02.	
20	Hoist (UNIT 5)	5Ton	2007. 10.	
21	Hoist (UNIT 6)	5Ton	2004. 02.	
22	Hoist (UNIT 7)	10Ton	2010. 10.	
23	Hoist (UNIT 8)	5Ton	2010. 10.	
24	Forklift	4.5Ton	2012. 08.	
25	Forklift	3.0Ton	2012. 08.	
26	Forklift	3.0Ton	2012. 09.	
27	Compressor	50HP	2007. 10.	
28	MPI SYSTEM	NDT	2013. 01	

STEP.2

# Product API 5CT & Conduit Coupling



# Product

## | Specification |



<b>Out Diameter (O.D)</b>	77.80mm~365.13mm(2-3/8"~13-3/8")
<b>Connection</b>	External-Upset Tubing Coupling(EU) Short Thread Casing Coupling(SC) Long Thread Casing Coupling(LC) Buttless Thread Casing Coupling(BC)
<b>Standard</b>	API 5CT & 5B
<b>Material (Grade)</b>	J55, K55, N80, L80, P110
<b>Surface Treatment</b>	Phosphate coating / Painting / Rust Proofing
<b>Test</b>	Magnetic Particle Inspection
<b>Function</b>	Coupling connects the tubing and casing pipe for OCTG
<b>Certification</b>	API 5CT ISO 9001
<b>Packing</b>	seaworthy packing, export standard packing
<b>Delivery time (nomal)</b>	90days after received order sheet

### API EXTERNAL-UPSET TUBING COUPLING DIMENSIONS AND MASSES.

SIZE (Inch)	TYPE	OD (inch)	Length (Inch)	Weight per coupling (lbs)	GRADE
2-3/8"	EUE	3.063	4.875	3.43	J55 K55 N80 L80 P110
2-7/8"	EUE	3.668	5.250	5.30	
3-1/2"	EUE	4.500	5.750	9.03	

### API CASING COUPLING-SHORT THREAD

SIZE (Inch)	TYPE	OD (inch)	Length (Inch)	Weight per coupling (lbs)	GRADE
4-1/2"	STC	5.000	6.250	8.05	J55 K55 N80 L80 P110
5"	STC	5.563	6.500	10.18	
5-1/2"	STC	6.050	6.750	11.44	
7"	STC	7.656	7.250	18.34	
7-5/8"	STC	8.500	7.500	26.93	
8-5/8"	STC	9.625	7.750	35.58	
9-5/8"	STC	10.625	7.750	39.51	
10-3/4"	STC	11.750	8.000	49.61	
13-3/8"	STC	14.375	8.600	56.57	

### API CASING COUPLINGS-LONG THREAD

SIZE (Inch)	TYPE	OD (inch)	Length (Inch)	Weight per coupling (lbs)	GRADE
4-1/2"	LTC	5.000	7.000	9.07	J55 K55 N80 L80 P110
5"	LTC	5.563	7.750	12.56	
5-1/2"	LTC	6.050	8.000	14.03	
7"	LTC	7.656	9.000	23.67	
7-5/8"	LTC	8.500	9.250	34.23	
8-5/8"	LTC	9.625	10.000	47.48	
9-5/8"	LTC	10.625	10.500	55.77	
10-3/4"	LTC	11.750	10.500	62.38	

### API CASING COUPLINGS-BUTTLESS THREAD

SIZE (Inch)	TYPE	OD (inch)	Length (Inch)	Weight per coupling (lbs)	GRADE
4-1/2"	BTC	5.000	8.875	10.11	J55 K55 N80 L80 P110
5"	BTC	5.563	9.125	12.99	
5-1/2"	BTC	6.050	9.250	14.14	
7"	BTC	7.656	10.000	23.22	
7-5/8"	BTC	8.500	10.375	64.84	
8-5/8"	BTC	9.625	10.625	45.94	
13-3/8"	BTC	11.750	10.625	70.04	



# Product

(CONDUIT COUPLING)



## I Specification I

Product name	Conduit pipe coupling
Standard	KS / BC / BS / UL6 / ANSI C80.1
Size	1/2"~6"
Surface	Zinc plate on both out side and inner side
Material	압력배관용 탄소강관 (SPPS)

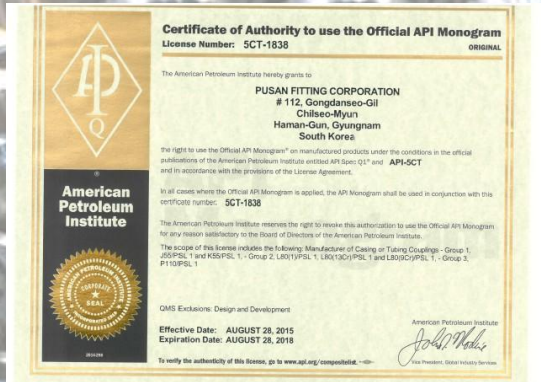
## UL6 COUPLING

		OUTER DIA(외경)				THREAD UNIT(나사산 수)			
		KS	BS	BC	ANSI	KS	BS	BC	ANSI
6A	0.125	14				28			
8A	0.25	18.5				19			
10A	0.375	21.3				19			
15A	0.5	26.4	27.0 ~ 27.3	25	25.7	14	14	14	14
20A	0.75	31.8	32.5 ~ 32.8	31	31.8	14	14	14	14
25A	1	39.5	39.5 ~ 39.8	37.5	38.7	11	11	11	11.5
32A	1.25	48.3	49.0 ~ 49.3	48.5	47.5	11	11	11	11.5
40A	1.5	54.5	56.0 ~ 56.3	54.5	54.7	11	11	11	11.5
50A	2	66.3	68.0 ~ 68.3	68	67.3	11	11	11	11.5
65A	2.5	82	84	84	82.6	11	11	11	8
80A	3	95	98	97	98.3	11	11	11	8
90A	3.5	114	110.9	110.5	114.3	11	11	11	8
100A	4	122	124	123.5	123.8	11	11	11	8
125A	5	147	151		152.4	11	11	11	8
150A	6	174	178		182.9	11	11	11	8





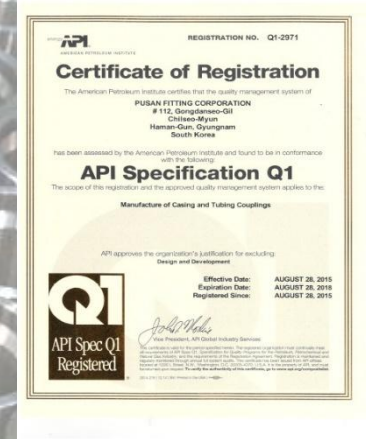
# Certificate



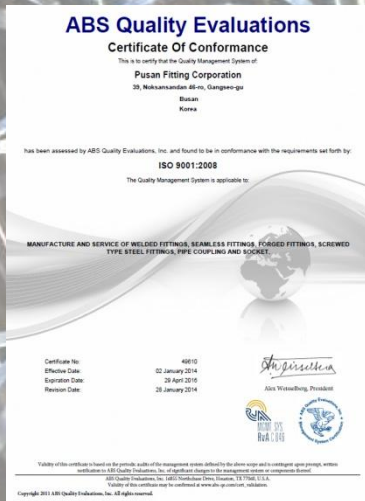
## API-5CT



## API-6A



## API-Q1



## ISO 9001:2008



## ISO14001:2004



## ISO18001:2007



STEP.3

Product Process



# Process Flow Chart

□ Product name : API 5CT COUPLING



# INSPECTION

CNC process then proceeds to Q.C Inspection of each line and determines Whether or not the defective.



# THANK YOU